



TAILGATE ASSIST SHOCK TAS-0203 INSTRUCTION MANUAL

[V20200537]



FOR INSTALLATION ON DRIVER'S SIDE ONLY!

READ THESE INSTRUCTIONS BEFORE USE & KEEP FOR FUTURE REFERENCE

SAFETY INFORMATION

WARNING

- This product is **NOT** a substitute for pinning, latching, or locking the tailgate in its upright position; always do so.
- **ALWAYS** firmly support the opened tailgate if used to hold objects as this product does not make the tailgate weight bearing.
- **NEVER** raise or lower the tailgate while anyone or anything is under the tailgate.
- When the product is in use, keep hands away from all openings, rollers, and cables.

CAUTION

Minor adjustments may be necessary to ensure your tailgate lift assist kit works properly due to the many different sizes, weights, and designs of trailers and tailgates. After the initial installation of your tailgate lift, carefully ensure that it is working properly. Check to make sure there is proper tension on your tailgate. Never force the tailgate up or down. It should travel with very little effort in both directions. Always make sure that the cable travels in the grooved portion of the rollers and that the rollers are turning freely during operation.

FITMENT

1997–2003 Ford F-150

1999–2016 Ford F-250 and F-350 Super Duty

PARTS LIST

- 1 × Shock
- 1 × Mount Plate
- 1 × Ball Mount
- 1 × Torx Wrench
- 1 × Blind Nut
- 1 × Blind Nut Tool
- 1 × Tube of Threadlocker
- 1 × Mylar Sheet

Req. but Not Incl.: 13mm, 16mm,
and 16mm Deep Well Wrenches;
Tape Measure; 8mm and 11mm Wrench
(F-250 and F-350 only)

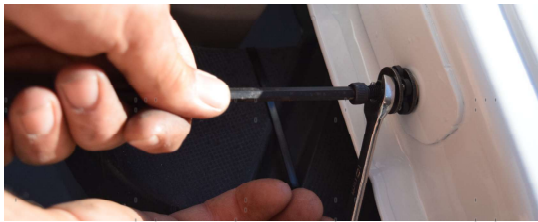


INSTALLATION

1. Adjust the washer of the blind nut tool so it is positioned $\frac{3}{4}$ " from the head of the bolt.



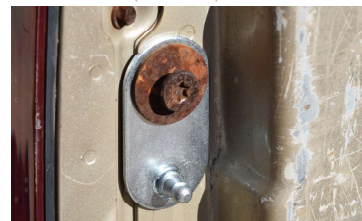
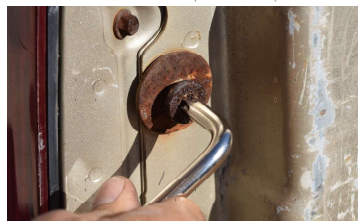
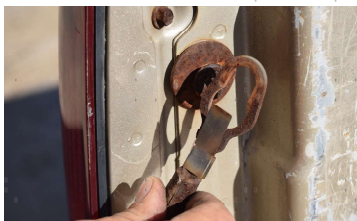
2. Install the blind nut in the opening near the tailgate hinge with an M6 hex wrench and a 13mm wrench. Tighten the blind nut 360° at least 9 times. Mark the nut and count the number of revolutions. After 9 revolutions, if the blind nut can still move or rotate, continue to tighten the blind nut an extra 1–2 revolutions. Check if the blind nut is secure once more and continue tightening if needed. Remove the blind nut tool once installation is complete. **CAUTION: DO NOT** overtighten the blind nut or you may strip the threads.



3. Apply the included thread-locking fluid to the threads of the bolt. Insert the bolt through the hole of the bottom mount plate and into the blind nut installed in Step 2. Torque to 12 lb-ft with a 16mm deep well socket wrench.



4. Remove the tailgate cable from the cable bolt, and then remove the cable bolt with the included torx wrench or a T50 torx socket. Insert the previously removed cable bolt through the hole of the mount plate and reinstall the cable bolt with the mount plate onto the vehicle with the included torx wrench or a T50 torx socket.



5. For F-250 and F-350 trucks, remove the 2 bolts holding the tailgate in place with an 8mm wrench. The taillight has 2 clips holding it in place. To remove the taillight, pull it towards the rear of the vehicle. Remove the 2 nuts inside the taillight opening that are holding the rubber block in place by using an 11mm wrench. Reinstall the taillight after removing the rubber block.



6. The included mylar sheet can prevent components from rubbing against the truck bed and tailgate in the event that parts become loose. Cut the mylar sheet to the required size with a pair of scissors. Apply the mylar sheet to the truck bed and tailgate where tailgate assist components come close to contact during operation.

The images shown are only examples of how the mylar sheet can be installed on a vehicle. Install according to your specific vehicle.



7. Attach the tailgate cable back onto the cable bolt. Install the thicker end of the shock onto the top mount plate. Install the narrower end of the shock onto the bottom ball mount.



8. Perform periodic inspection and maintenance to ensure the parts have not loosened from use. If there are any loose parts, retighten as needed.



CONTACT US

Thank you for choosing our products! If you have any questions or comments, contact us at help@cs-supportpro.com and we'll resolve your issue ASAP!

For a .pdf copy of the latest version of these instructions, use the appropriate app on your smartphone to scan the QR code to the right.

