



TAILGATE ASSIST SHOCK TAS-0301 INSTRUCTION MANUAL



FOR INSTALLATION ON DRIVER'S SIDE ONLY!

READ THESE INSTRUCTIONS BEFORE USE & KEEP FOR FUTURE REFERENCE

SAFETY INFORMATION

⚠ WARNING

- This product is **NOT** a substitute for pinning, latching, or locking the tailgate in its upright position; always do so.
- **ALWAYS** firmly support the opened tailgate if used to hold objects as this product does not make the tailgate weight bearing.
- **NEVER** raise or lower the tailgate while anyone or anything is under the tailgate.
- When the product is in use, keep hands away from all openings, rollers, and cables.

⚠ CAUTION

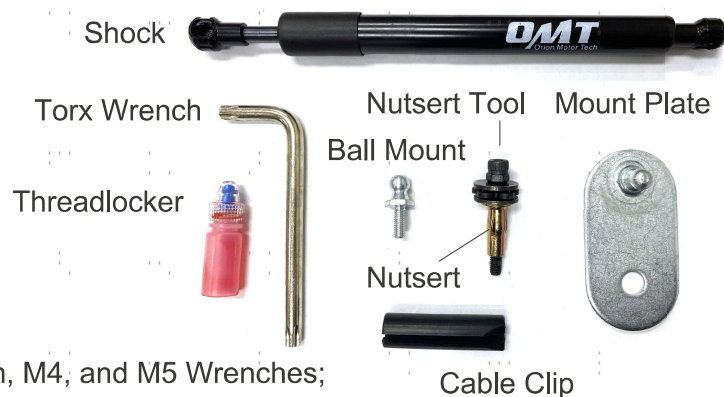
Minor adjustments may be necessary to ensure your tailgate lift assist kit works properly due to the many different sizes, weights, and designs of trailers and tailgates. After the initial installation of your tailgate lift, carefully ensure that it is working properly. Check to make sure there is proper tension on your tailgate. Never force the tailgate up or down. It should travel with very little effort in both directions. Always make sure that the cable travels in the grooved portion of the rollers and that the rollers are turning freely during operation.

FITMENT

Ram 1500 2009-2018, Ram 2010-2018 2500/3500

PARTS LIST

- 1 × Shock
- 1 × Mount Plate
- 1 × Ball Mount
- 1 × Torx Wrench
- 1 × Nutsert
- 1 × Nutsert Tool
- 1 × Cable Clip
- 1 × Tube of Threadlocker
- 1 × Mylar Sheet



Req. but Not Incl.: 10mm, 13mm, M4, and M5 Wrenches;
Flathead Screwdriver; Tape Measure; Pliers

INSTALLATION

1. Adjust the washer of the nutsert tool so it is positioned $\frac{3}{4}$ " from the head of the bolt.



2. Install the nutsert in the opening near the tailgate hinge with an M5 hex wrench and a 10mm wrench. Tighten the nutsert 360° at least 9 times. Mark the nut and count the number of revolutions. After 9 revolutions, if the nutsert can still move or rotate, continue to tighten it an extra 1–2 revolutions. Check if the nutsert is secure once more and continue tightening if needed. Remove the nutsert tool once installation is complete.

CAUTION: DO NOT overtighten the nutsert or you may strip the threads.



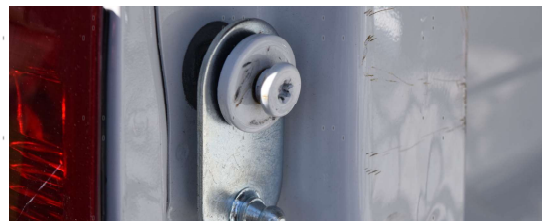
3. Apply the included thread-locking fluid to the threads of the ball mount. Install the ball mount with a 13mm wrench into the nutsert that was installed in Step 2. Torque to 8 lb-ft.



4. Remove the tailgate cable from the cable bolt, and then use the included torx wrench or a T45 torx socket to remove the cable bolt.



5. Insert the previously removed cable bolt through the hole of the mount plate and reinstall the cable bolt with the mount plate onto the vehicle with the included torx wrench or a T45 torx socket.

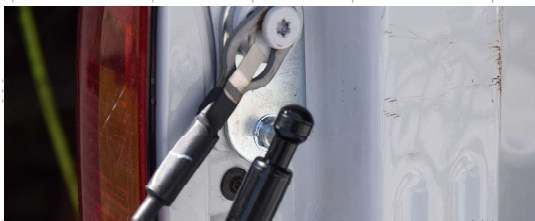


6. The included mylar sheet can prevent components from rubbing against the truck bed and tailgate in the event that parts become loose. Cut the mylar sheet to the required size with a pair of scissors. Apply the mylar sheet to the truck bed and tailgate where tailgate assist components come close to contact during operation.

The images shown are only examples of how the mylar sheet can be installed on a vehicle. Install according to your specific vehicle.



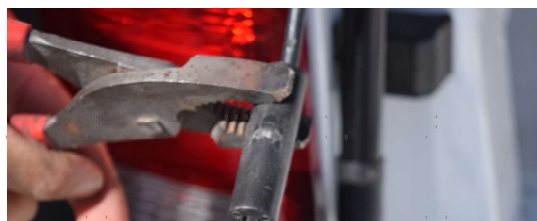
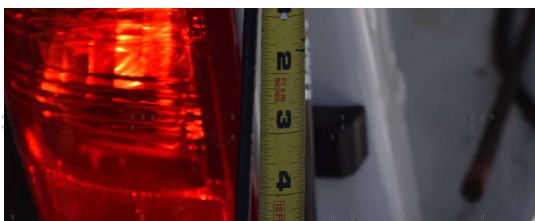
7. Attach the tailgate cable back onto the cable bolt. Install the thicker end of the shock onto the mount plate. Install the narrower end of the shock onto the bottom ball mount.



8. Remove the end of the tailgate cable attached to the tailgate using the included torx wrench or a T45 torx socket. Remove the motion limiter by using a flathead screwdriver to pry up one of the edges of the retaining nut. Hold the nut with a pair of pliers while spinning the bolt out.



9. Press the cable clip with a pair of pliers onto the tailgate cable starting 3½" from the top of the tailgate cable. Failure to remove the limiter and install the cable clip may lead to vehicular damage caused by the cable becoming caught between the shock and the truck bed.



CONTACT US

Thank you for choosing our products! If you have any questions or comments, contact us at support@orionmotortech.com and we'll resolve your issue ASAP!

For a .pdf copy of the latest version of these instructions, use the appropriate app on your smartphone to scan the QR code to the right.

