

Tailgate Assist Instruction Manual



Read Carefully Before Use
Keep for Future Reference

Safety Information

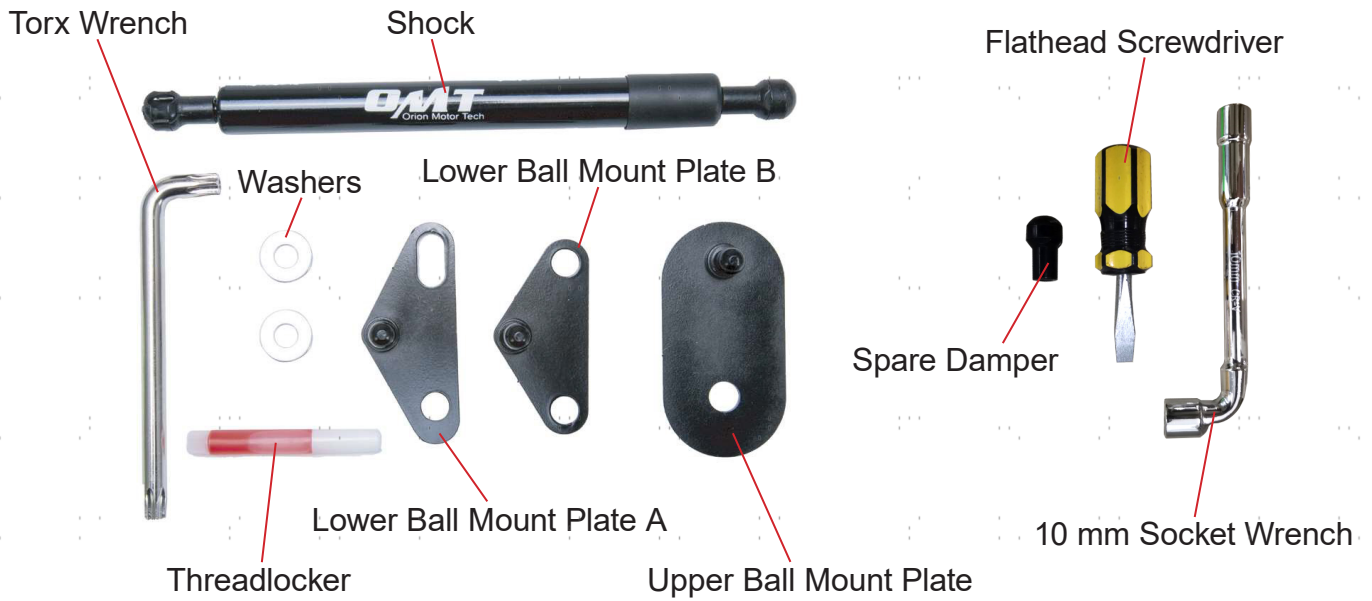
Warning!

- The instructions provided herein are only for general information. **ALWAYS** use this product in full compliance with your vehicle's service manual.
- **DO NOT** allow children or those unfamiliar with this product and its compatible vehicle models to use it. Do not use while under the influence of alcohol, drugs, or any medication that negatively affects your judgment or reflexes. Keep children and bystanders away during use.
- Dress properly for automotive servicing. Do not wear loose clothing or jewelry and keep hair, clothing, gloves, hoses, and tools away from any moving parts during use.
- Do not overreach. Keep proper footing and balance at all times.
- **DO NOT** use excessive pressure with this product and do not force it or its attachments.
- Maintain this product. Check for misalignment, binding, wear, or other damage before use. If any damage is detected, repair or replace the problematic components before further use. In a large shop, mark such tools **DO NOT USE** until they have been repaired. Only replace components with identical parts.

Specifications

| | | |
|-------------------|-----------------------|-----------|
| Material | 1045 Steel, CrV Steel | |
| Fitment | Ford F-150 | 2015–2022 |
| Net Weight | 1.6 lb. | 740 g |

Parts List



Included But Not Pictured: Mylar Sheet

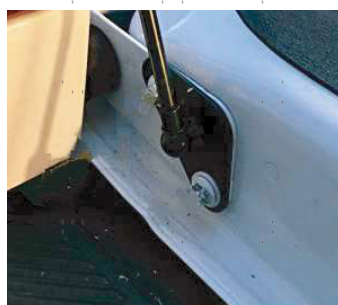
Required But Not Included: 13 mm and M5 Wrenches; Tape Measure

Installation

1. Locate the two bolts near the tailgate hinge on the side of the truck you plan to install the shock. Use the provided 10 mm socket wrench to remove the two bolts.



2. Apply the provided threadlocker to the threads of the two removed bolts and install the lower ball mount plate by screwing the bolts through its holes into the tailgate holes. Tighten it firmly into place with the 10 mm socket wrench. For the passenger's side, use plate A. For the driver's side, use plate B.



3. Use the flathead screwdriver to loosen the tailgate cable, lift it off your truck bed's cable bolt, and then use the provided torx wrench or a T50 socket to remove the bolt.



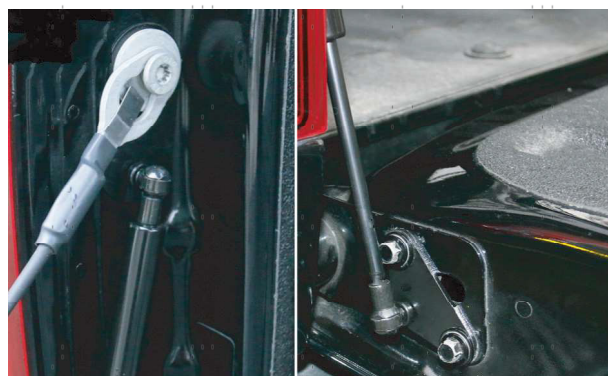
4. Insert the previously removed cable bolt through the hole of the upper ball mount plate and then use the torx wrench to reinstall the cable bolt with the mount plate back onto the vehicle.



5. Use the provided mylar sheet to prevent any damage to your truck bed and tailgate during use. Cut the mylar sheet as needed with a pair of scissors. Apply the mylar to the truck bed and tailgate where components come in close contact during operation. The images below can be used as an example but the exact location should be adjusted according to your truck's specific requirements.



6. Attach the tailgate cable back onto the cable bolt. Install the thicker end of the shock onto the top mount plate. Install the narrower end of the shock onto the bottom ball mount.



Maintenance

- Clean these tools with a dry brush or cloth after use. If rinsing is necessary, dry all parts completely before storage. Clean the tailgate assist as needed. Never use abrasive cleaners or caustic chemicals with any part.
- Check the tailgate assist and these tools periodically for any looseness, wear, or damage. Tighten, repair, or replace any problematic parts before further use.
- If the assist will not be used for an extended period of time, remove and store in a cool dry place inaccessible to children.

Contact Us

Thank you for choosing our products! If you have any questions or comments, contact us at help@cs-supportpro.com and we'll resolve your issue ASAP!

For a .pdf copy of the latest version of these instructions, use the appropriate app on your smartphone to scan the QR code to the right.



