

10 Pc. Bearing Race and Seal Driver Set

User Manual



Read Carefully Before Use
Keep for Future Reference

Disclaimer

Read this disclaimer completely and carefully before proceeding with the rest of the manual content.

1. **Product Modifications**

Any modifications or alterations to Orion Motor Tech products void any warranties and may result in damage or injury. Orion Motor Tech shall not be liable for any damages resulting from such modifications or alterations.

2. **Compliance with Laws**

Customers shall be liable for ensuring that the use of Orion Motor Tech products complies with all applicable laws and regulations in their respective jurisdictions. Orion Motor Tech assumes no responsibility for any violations of laws or regulations resulting from the use of Orion Motor Tech products.

3. **Correct Use**

Always use Orion Motor Tech products only as directed in the accompanying manuals. Failure to follow instructions may result in injury or damage.

Always ensure the assembly, installation, operation, maintenance, or repair of Orion Motor Tech products is carried out by a competent person.

Always make maintenance regularly throughout Orion Motor Tech products' lifecycles; you have the liability to keep the products operating as intended.

Always wear appropriate protective gear.

4. **Third-Party Products**

Orion Motor Tech shall not be liable for any damages or losses resulting from the use of third-party products in conjunction with Orion Motor Tech products. Customers shall refer to the third-party's guidelines or/and warranties (if any) for any third-party products used.

5. **Limitation of Liability**

Orion Motor Tech shall not be liable for any direct, indirect, punitive, incidental, special, or consequential damages to property or life, whatsoever arising out of or connected with the use or misuse of Orion Motor Tech products. In no event shall Orion Motor Tech's liability exceed the value of the products sold.

6. **Warranty**

Refer to the sales page for warranty information.

This disclaimer states the entire obligation of Orion Motor Tech with respect to Orion Motor Tech products. If any part of this disclaimer is determined to be void, invalid, unenforceable, or illegal, including but not limited to the warranty disclaimers, liability disclaimers, and liability limitations set forth above, the invalid or unenforceable provision will be deemed superseded by a valid and enforceable provision that most closely matches the intent of the original provision and the remainder of the agreement shall remain in full force and effect.

Maintenance

Danger

- This manual **ONLY** provides instructions about **THIS** product. **ALWAYS** perform all repairs in full compliance with your vehicle's service manual.
- After any repair, test your engine and vehicle at low speed in your workshop while wearing all protective gear before returning to normal use. Failure to do so may result in serious property damage and severe personal injury.
- **DO NOT** allow children, persons unfamiliar with this product and its compatible vehicle systems, or anyone with physical or mental limitations that hinder safe use to use it. • **DO NOT** use while under the influence of alcohol, drugs, or any medication that negatively affects your judgment or reflexes. Keep children and bystanders away during use.
- **ALWAYS** use personal protective equipment (PPE) suitable for your task. **ALWAYS** wear ANSI and OSHA-approved eye, breathing, and hand protection while using this product. Nonslip footwear is also highly recommended.
- Additional ear, head, and body protection may be necessary depending on specific work conditions and environment.
- **DO NOT** overreach. Keep proper footing and balance at all times.
- **DO NOT** use excessive pressure with this product.
- Maintain this product. Check for misalignment, binding, wear, or other damage before use. In the event of damage or malfunction, ensure that the affected part(s) are repaired or replaced before continued use.
- Automotive repair is naturally dangerous, and this manual cannot address all possible situations. **ALWAYS** use discretion and good judgment.

Warning

- Dress properly. **DO NOT** wear loose clothing or jewelry, and keep hair, clothing, gloves, hoses, and tools away from any moving parts during use.
- For best results, keep the kit clean and dry. Wipe off any fluid, oil, or grease before and after use.

Specifications

Material	Aluminum	
Case Dimensions	260 × 150 × 91 (mm)	10.24 × 5.91 × 3.58 (in.)
Weight	1.6 kg	3.53 lb.

Parts List



No.	Item	Qty.
A	Driver	1
B	81 mm Disc Collar	1
C	76 mm Disc Collar	1
D	72 mm Disc Collar	1
E	65 mm Disc Collar	1

No.	Item	Qty.
F	63 mm Disc Collar	1
G	59 mm Disc Collar	1
H	50 mm Disc Collar	1
I	44.5 mm Disc Collar	1
J	39.5 mm Disc Collar	1

Operation

Warning

- *Shut off the engine before servicing. Ensure the vehicle is parked and stable, and that the engine has cooled to room temperature before performing maintenance or adjustments.*
- *Make sure your surroundings are safe before using the tool. Avoid operating in crowded or unstable areas.*
- **ALWAYS** *ensure the vehicle is secure when supported by a jack or lift.*
- *Make sure the item being installed or removed has sufficient capacity to avoid damage.*
- *For your safety, we recommend taking training before using these tools. Lack of training could result in serious injury.*

Installing the Race

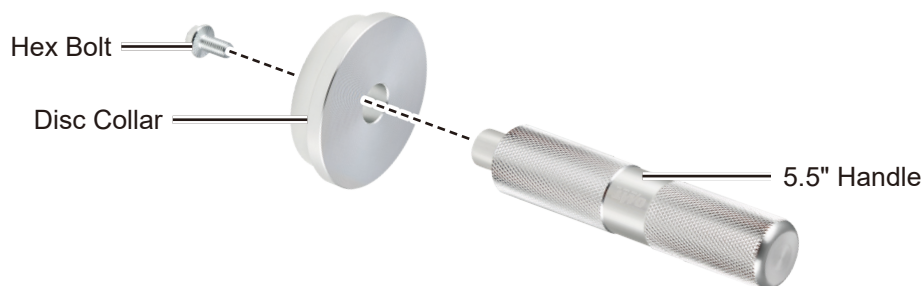
1. Select the appropriate collar for the size and type of bearing to be installed.

Note: *The tapered side of the collar must match the bearing race exactly.*

2. Remove the hex bolt from the driver.
3. Insert the driver into the selected collar.

Note: *The tapered side of the collar should face the hex bolt.*

4. Screw the hex bolt to the driver.



5. Place the outer race onto the housing of the bearing.
6. Align the tapered side of the collar with the race.

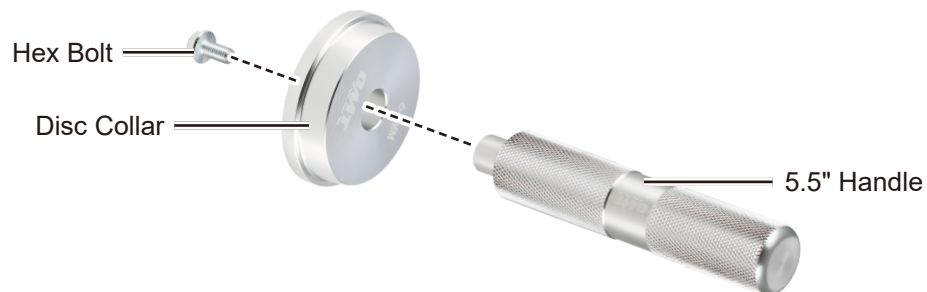
Operation

7. Apply steady, even pressure to the driver, slowly pressing the race into the housing until the race is flush with the housing rim.



Installing the Seal

1. Select the appropriate collar for the seal to be installed.
Note: *The flat side of the collar should be slightly larger than the seal.*
2. Remove the hex bolt from the driver.
3. Flip the collar over so that the flat side faces the hex bolt.
4. Insert the driver into the selected collar.
5. Screw the hex bolt to the driver.



6. Place the seal into the designated groove of the bearing's outer or inner ring.

Operation

7. Apply steady, even pressure to the driver, slowly pressing the seal into the designated seal groove until the seal is flush with the race.



Maintenance

- Check for smooth movement and secure connections before each use. **NEVER** use this tool if any part is loose, bound, worn, or damaged. Tighten, lubricate, repair, or replace all such components before continued use. Only replace components with identical parts.
- Clean the components of this kit after each use. **DO NOT** use caustic chemicals or harsh abrasives.
- If this kit will not be used for an extended period, clean all components, place them in their storage case, and store them in a cool dry location inaccessible to children and away from direct sunlight.

Contact Us

Thank you for choosing our products! If you have any questions or comments, contact us and we'll address your issues ASAP!

 support@orionmotortech.com



Scan for the latest
user manual