

# Bearing Race and Seal Driver Set

User Manual Read Carefully Before Use  
Keep for Future Reference



**OMT**  
Orion Motor Tech

# We care about your experience!

We truly hope our product brings you joy and convenience.

If you have any questions or need assistance, please don't hesitate to reach out.

We're always happy to help!

Simply fill out the form below, take a photo of it (along with any relevant photos or videos if needed), and email it to us. Our service team will respond within 24 hours.

## Platform

Amazon  eBay  Walmart  Wayfair  Other: \_\_\_\_\_ (please specify)

## Order Information

Order No.: \_\_\_\_\_

Product: \_\_\_\_\_

Purchase Date: \_\_\_\_\_

Your Name: \_\_\_\_\_

## Subject of Inquiry

---

Your satisfaction means everything to us :)



support@orionmotortech.com



https://orionmotortech.com/

@OrionMotorTech



# Safety Information

## Danger

- The instructions provided here are for general information only. **ALWAYS** perform all repairs in full compliance with your vehicle's service manual. After completing any repair, test your vehicle in your workshop at a low speed before resuming regular use. Failure to do so may result in serious property damage and severe personal injury.
- **DO NOT** allow use by children, individuals with mental or physical conditions that may impair safe operation, or persons unfamiliar with this product and its compatible air conditioning, fuel, and transmission systems.
- **ALWAYS** wear appropriate personal protective equipment (PPE) during use. Required PPE may include eye, respiratory, and hand protection, depending on your application or work environment. Respiratory protection must be capable of filtering all particles generated by your work, even when working outdoors. A dust mask or respirator is highly recommended. Anyone allowed nearby during use should wear equivalent PPE.
- **ALWAYS** read and understand your vehicle's specific safety warnings and instructions before using this kit. Use the correct fluids, pressures, adapters, and other necessary components for your vehicle. Ensure the parking brake is engaged before beginning any work. Use a jack and jack stands that can fully support the necessary weight. Never touch any heated surface with exposed skin.
- **DO NOT** overreach. Keep proper footing and balance at all times.
- Maintain this product. Check for misalignment, binding, wear, or other damage before use. If any damage is detected, repair or replace the faulty components before further use. In a large shop, mark such a tool "**DO NOT USE**" until it has been repaired. **ONLY** replace components with identical parts.

## Warning

- **DO NOT** use this product if you are tired or under the influence of drugs, alcohol, or strong medication.
- For best results, keep the kit clean and dry. Remove any fluid, oil, or grease before and after work, particularly from the handle and fittings.
- **DO NOT** use excessive pressure on this product and do not force it or its attachments.
- **ENSURE** the vehicle is secure when supported by a jack or lift.
- Dress appropriately for automotive servicing. Do not wear loose clothing or jewelry. Keep hair, clothing, gloves, hoses, and tools away from moving parts during use.
- In case of an accident or injury, keep a first aid kit and a communication device (e.g., a phone) readily available. Be familiar with the location of nearby emergency medical facilities.
- Automotive repair is an inherently dangerous activity. This manual and the separate vehicle service manual cannot cover all possible situations that may arise. **ALWAYS** exercise discretion and good judgement. Seek training if needed.

# Parts List



No.	Item	Qty.
<b>A</b>	Driver	1
<b>B</b>	Disc Collar 81 mm	1
<b>C</b>	Disc Collar 76 mm	1
<b>D</b>	Disc Collar 72 mm	1
<b>E</b>	Disc Collar 65 mm	1

No.	Item	Qty.
<b>F</b>	Disc Collar 63 mm	1
<b>G</b>	Disc Collar 59 mm	1
<b>H</b>	Disc Collar 50 mm	1
<b>I</b>	Disc Collar 44.5 mm	1
<b>J</b>	Disc Collar 39.5 mm	1

\*Suitable for installing standard bearing races on various passenger cars, light trucks, and small trailers.



No.	Item	Qty.
1	Disc Collar 5-31/32"	1
2	Disc Collar 5-11/16"	1
3	Disc Collar 4-13/16"	1
4	Disc Collar 6-5/16"	1

No.	Item	Qty.
5	Disc Collar 6"	1
6	Drivers	2
7	Washer	1
8	Nut M8	1

\*Suitable for heavy vehicles such as Class 7 and 8 trucks, trailers, and certain medium and heavy-duty trucks.

# Operation

## Warning

- **Before servicing, shut off the engine, engage the parking brake (or hand brake), and chock the remaining wheels.** Ensure the vehicle is stationary and the engine has cooled to room temperature before performing maintenance or adjustments.
- **ALWAYS** use the correct tools and personal protective equipment (PPE) before performing any operation. Be extremely careful with possible pinching points, moving parts, or parts that may suddenly spring out.
- **ALWAYS** ensure the vehicle is secure when it is supported by a jack or lift.
- Keep your hands away from the sprockets and belt when using the camshaft gear locking tools.
- For your safety, we recommend completing training before using these tools. Serious injury could happen due to a lack of training.

## Installing the Race

1. Select and assemble the tool according to the vehicle.

### For various passenger cars, light trucks, and small trailers:

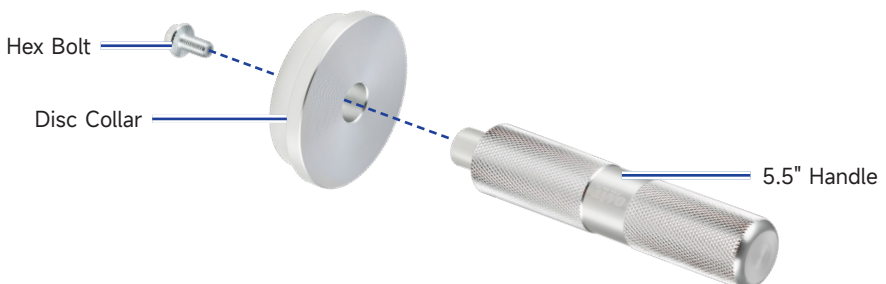
- a. Select the appropriate collar for the size and type of bearing to be installed.

**Note:** Due to unit conversion, the dimensions may vary slightly. Refer to the metric measurements for accuracy.

- b. Remove the hex bolt from the driver.
- c. Insert the driver into the selected collar.

**Note:** The tapered side of the collar should face the hex bolt.

- d. Screw the hex bolt to the driver.



**For class 7 and 8 trucks, trailers, and certain medium and heavy-duty trucks:**

- a. Select the appropriate collar for the size and type of bearing to be installed.

**Note:** The tapered side of the collar must match the bearing race exactly.

- b. Insert the driver into the selected collar.
- c. Secure the driver using the washer and the nut.



3. Place the outer race onto the housing of the bearing.
4. Align the tapered side of the collar with the race.
5. Apply steady, even pressure to the driver, slowly pressing the race into the housing until the race is flush with the housing rim.



## Installing the Seal

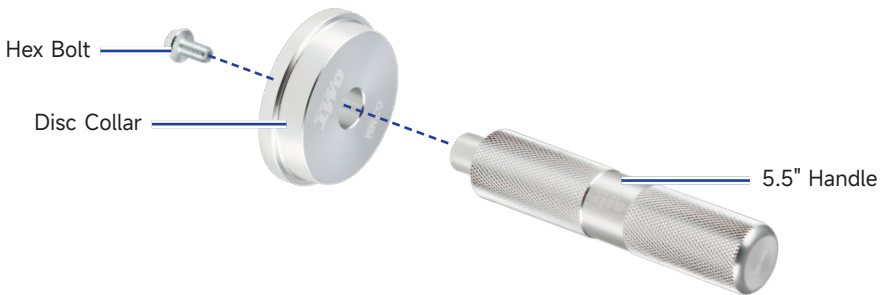
1. Select and assemble the tool according to the vehicle.

### For various passenger cars, light trucks, and small trailers:

- a. Select the appropriate collar for the seal to be installed.

**Note:** The flat side of the collar should be slightly larger than the seal.

- b. Remove the hex bolt from the driver.
- c. Flip the collar over so that the flat side faces the hex bolt.
- d. Insert the driver into the selected collar.
- e. Screw the hex bolt to the driver.



**For class 7 and 8 trucks, trailers, and certain medium and heavy-duty trucks:**

- a. Select the appropriate collar for the size and type of bearing to be installed.

**Note:** The flat side of the collar should be slightly larger than the seal.

- b. Flip the collar over so that the flat side faces the nut.
  - c. Insert the driver into the selected collar.
  - d. Secure the driver using the washer and the nut.
2. Place the seal into the designated groove of the bearing's outer or inner ring.
  3. Apply steady, even pressure to the driver, slowly pressing the seal into the designated seal groove until the seal is flush with the race.



# Maintenance

- Clean the tools after each use with a soft, damp cloth and a mild detergent. Do not rinse them directly with water or use abrasive cleaners or caustic chemicals.
- For best results, lubricate the tools with high-quality anticorrosive oil between uses.
- Check all parts periodically for any wear or damage. Repair or replace any faulty parts before further use.
- If the tools are not going to be used for a long time, clean and lubricate them before storage. Keep them in a cool, dry place out of reach of children.

# Disclaimer

Read this disclaimer completely and carefully before proceeding with the rest of the manual content.

## 1. Product Modifications

Any modifications or alterations to Orion Motor Tech (OMT) products void any warranties and may result in damage or injury. OMT shall not be liable for any damages resulting from such modifications or alterations.

## 2. Compliance with Laws

Customers shall be liable for ensuring that the use of OMT products complies with all applicable laws and regulations in their respective jurisdictions. OMT shall not be responsible for any violations of laws or regulations resulting from the use of OMT products.

## 3. Correct Use

Always use OMT products only as directed in the accompanying manuals. Failure to follow instructions may result in injury or damage.

Always ensure the assembly, installation, operation, maintenance, or repair of OMT products is carried out by a competent person.

Regular maintenance should be performed throughout the lifecycle of OMT products. You are responsible for ensuring the products operate as intended.

Always wear appropriate protective gear.

## 4. Third-Party Products

OMT shall not be liable for any damages or losses resulting from the use of third-party products in conjunction with OMT products. Customers shall refer to the third-party's guidelines and/or warranties (if any) for any third-party products used.

## 5. Limitation of Liability

OMT shall not be liable for any direct, indirect, punitive, incidental, special, or consequential damages to property or life, whatsoever arising out of or connected with the use or misuse of OMT products. In no event shall OMT's liability exceed the value of the products sold.

## 6. Warranty

Refer to the sales page for warranty information.

This disclaimer states the entire obligation of OMT with respect to OMT products. If any part of this disclaimer is determined to be void, invalid, unenforceable, or illegal, including but not limited to the warranty disclaimers, liability disclaimers, and liability limitations set forth above, the invalid or unenforceable provision will be deemed superseded by a valid and enforceable provision that most closely matches the intent of the original provision and the remainder of the agreement shall remain in full force and effect.



**User Manual**