

Liquid Transfer Pump Kit

User Manual



OMT
Orion Motor Tech

Read Carefully Before Use
Keep for Future Reference

Disclaimer

Read this disclaimer **BEFORE** assembly, installation, use, and maintenance.

1. As-Is

This Orion Motor Tech (OMT) product is sold 'as is' and without any express or implied warranties, including but not limited to the implied warranties of merchantability and fitness for a particular purpose.

2. Product Modifications

Any modifications or alterations to OMT products void any warranties and may result in damage or injury. OMT is not liable for any damages resulting from such modifications or alterations.

3. Compliance with Laws

Customers shall be liable for ensuring that the use of OMT products complies with all applicable laws and regulations in their respective jurisdictions. OMT assumes no responsibility for any violations of laws or regulations resulting from the use of OMT products.

4. Correct Use

Always use OMT products only as directed in the accompanying manuals. Failure to follow instructions may result in injury or damage.

Always ensure the use and maintenance of OMT products is carried out by a competent person.

Always make necessary maintenance throughout OMT products' lifecycles. You have the liability to keep the products workable as intended.

Always wear appropriate protective gear when handling issues that pose potential safety hazards.

5. Third-Party Products

OMT is not be liable for any damages or losses resulting from the use of third-party products in conjunction with our products. Customers shall refer to the third-party's guidelines and/or warranties (if any) for any third-party products used.

6. Limitation of Liability

OMT is not be liable for any direct, indirect, punitive, incidental, special, or consequential damages to property or life, whatsoever arising out of or connected with the use or misuse of OMT products. In no event shall OMT's liability exceed the value of the products sold.

This disclaimer states the entire obligation of OMT with respect to the products. If any part of this disclaimer is determined to be void, invalid, unenforceable, or illegal, including but not limited to the warranty disclaimers, liability disclaimers, and liability limitations set forth above, the invalid or unenforceable provision will be deemed superseded by a valid and enforceable provision that most closely matches the intent of the original provision and the remainder of the agreement shall remain in full force and effect.

Safety Information

Warning

- Read **ALL** these instructions carefully **BEFORE** assembly, installation, and use.
Follow **ALL** these instructions strictly **DURING** assembly, installation, and use.
Failure to do so can bring about property damage and personal injury.
- **ONLY** use this product for its intended purpose, transferring liquids from one container to other designated places.
These liquids include water, weak acidic or alkaline solution, diesel, engine oil, and kerosene.
It is **NOT** a toy and should **NOT** be used playfully or carelessly.
Any other use **NOT** specified herein could potentially pose risks and void **ALL** warranties stated or implied.

Danger

Diesel, engine oil, and kerosene **ARE** flammable, skin-irritated, and fatal if swallowed.

- If working on them, remove **ANY** flammables and explosives **BEFOREHAND** and avoid **ANY** exposure to them **WITH** your exposed body parts.
- If **ANY** of them is accidentally ingested or inhaled, **IMMEDIATELY** contact Emergency Services or Poison Control and seek medical attention.

Clean off any residue on the skin with soap but **DO NOT** induce vomiting.

- **DO NOT** use this product for gasoline or other strong chemicals.
- **DO NOT** allow use by children, by persons whose mental or physical condition precludes safe use, or by anyone who has not read these instructions.
- **DO NOT** use this product while you are tired or under the influence of drugs, alcohol, or **ANY** medication that negatively affects your judgment or reflexes.
- **ALWAYS** keep children and pets away during use.
Restrict access to your work area as needed.
- **ALWAYS** ensure that your work area is clean, well-lit, and adequately ventilated.
Cluttered or dark areas invite accidents.
Particles generated during work may cause health problems if inhaled in large quantities.
- **ALWAYS** wear personal protective equipment (PPE) suitable for your task during use.
ANSI and OSHA-approved hand protection is required.
Nonslip footwear is highly recommended.
Breathing, eye, head, and body protection may also be necessary depending on your task and environment.

Safety Information

- **ALWAYS** dress properly.
DO NOT wear loose clothing or jewelry during use.
- **ALWAYS** keep hair, clothing, and gloves away from **ANY** moving parts during use.
- **ALWAYS** ensure that **ALL** parts **ARE** intact and securely tightened **BEFORE** use.
- **DO NOT** use this product **WITHOUT** the provided filter and tape or their equivalents.
- Take sufficient training **BEFORE** work and use good judgment at **ALL** times.
- **DO NOT** overreach. Keep proper footing and balance at **ALL** times.
- **DO NOT** force this product.
Stop work if **ANY** abnormalities occur.
- Exercise **EXTREME** caution with **ANY** possible pinching points and moving parts during work.
- In case of an accident or injury, have a first aid kit and a communication device (**e.g., a phone**) readily available. Know the locations of emergency medical facilities as well.
- For best results, keep this product clean and dry.
Remove any dust, debris, or excess oil **BEFORE** and **AFTER** each use.
- **ALWAYS** maintain this product.
Check for misalignment, wear, and damage **BEFORE** and **AFTER** each use.
Replace any problematic parts **BEFORE** further use.
- **DO NOT** use abrasive or caustic cleaners for this product.
- **DO NOT** soak this product in **ANY** cleaning fluid or expose it to rain for a prolonged period of time.
- Store this product out of the reach of children and pets **AFTER** each use.

Specifications

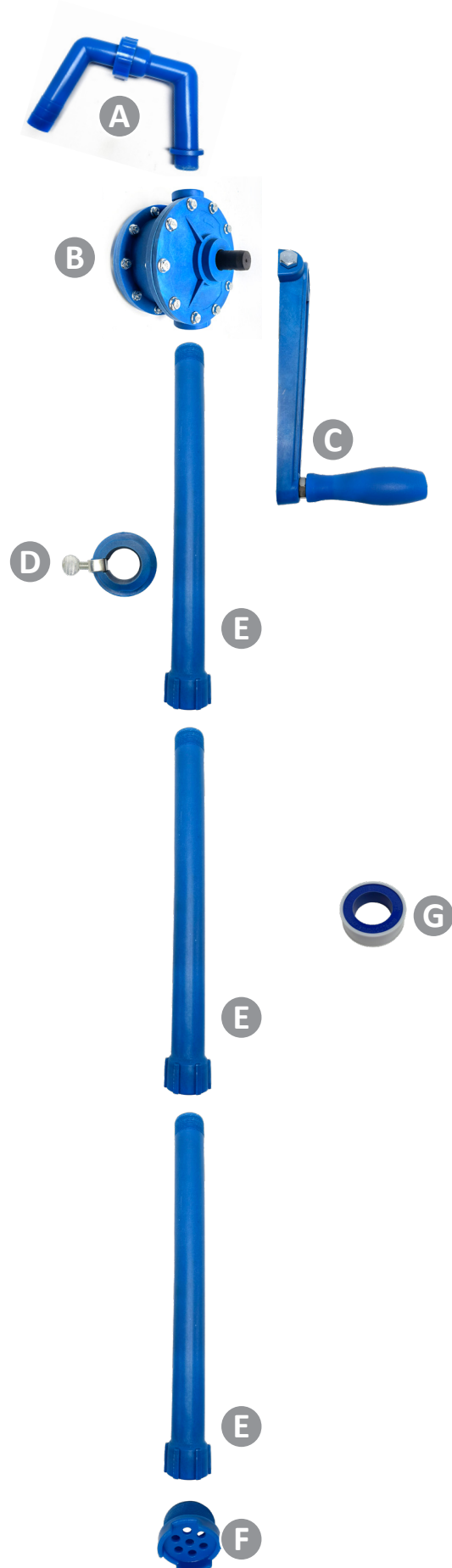
Main Material	Polypropylene (PP)
Max. Flow Rate	6 gpm (20 L/min.)
Net Weight	4.6 lb. (2.1 kg)
Compatible Liquids	Water, Weak Acidic/Alkaline Solution, Diesel, Engine Oil, Kerosene

Package List

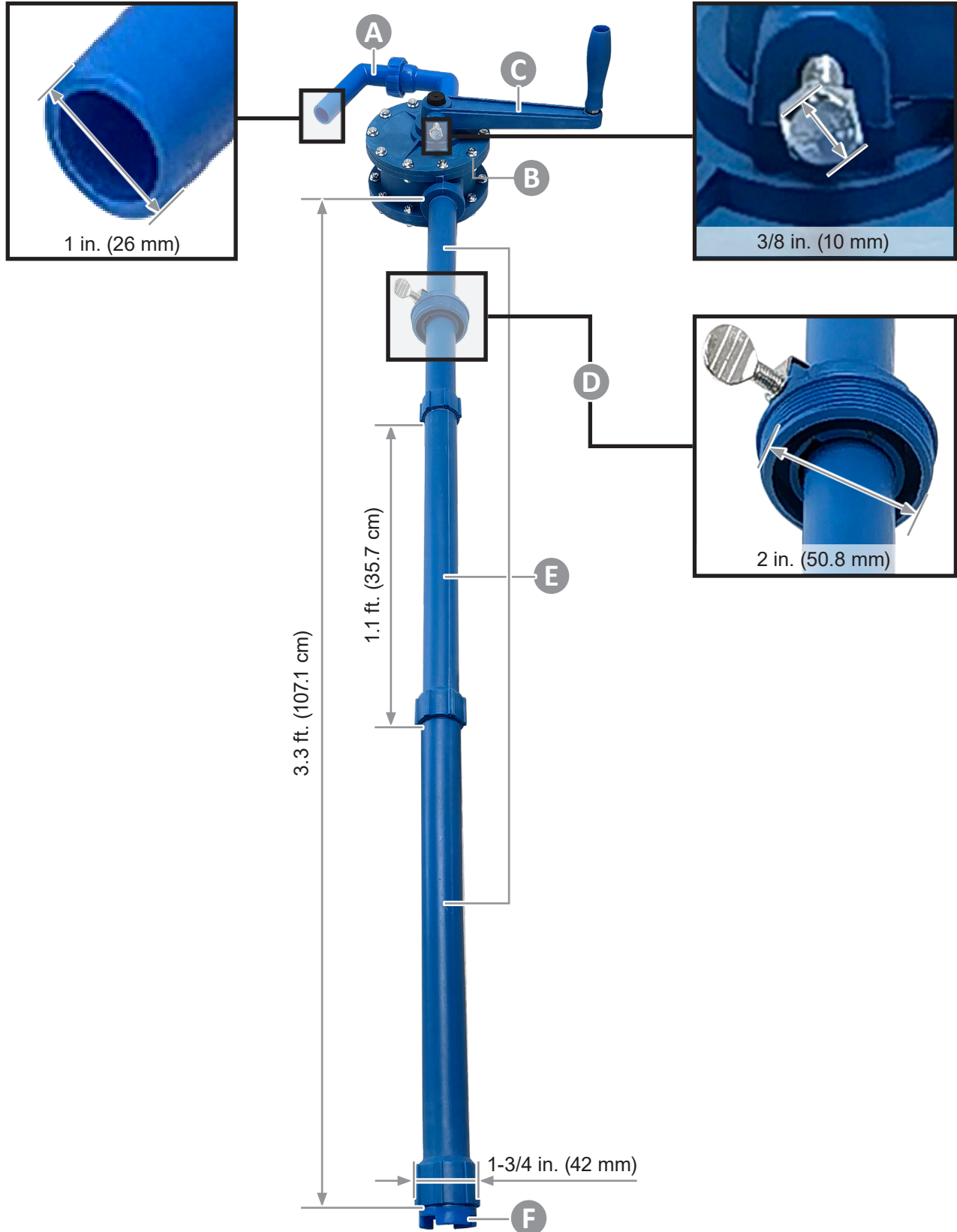
Item	Name	Qty.
A	Spout	1
B	Drum	1
C	Rotary Handle	1
D	Bung Adapter	1
E	Suction Tubes	3
F	Filter	1
G	PTFE Tape Roll	1

Not Included but Helpful:

- 1" Dia. Hose
- Hose Clamp



Product Diagram



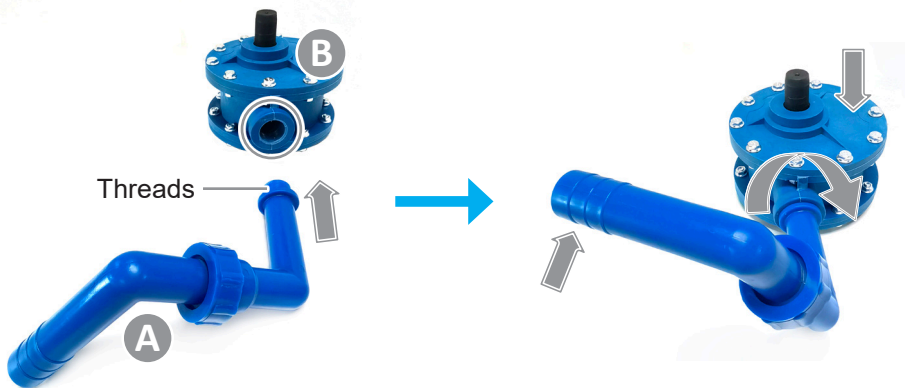
Assembly

Warning

Put on eye and hand protection **BEFORE** beginning to assemble this product.

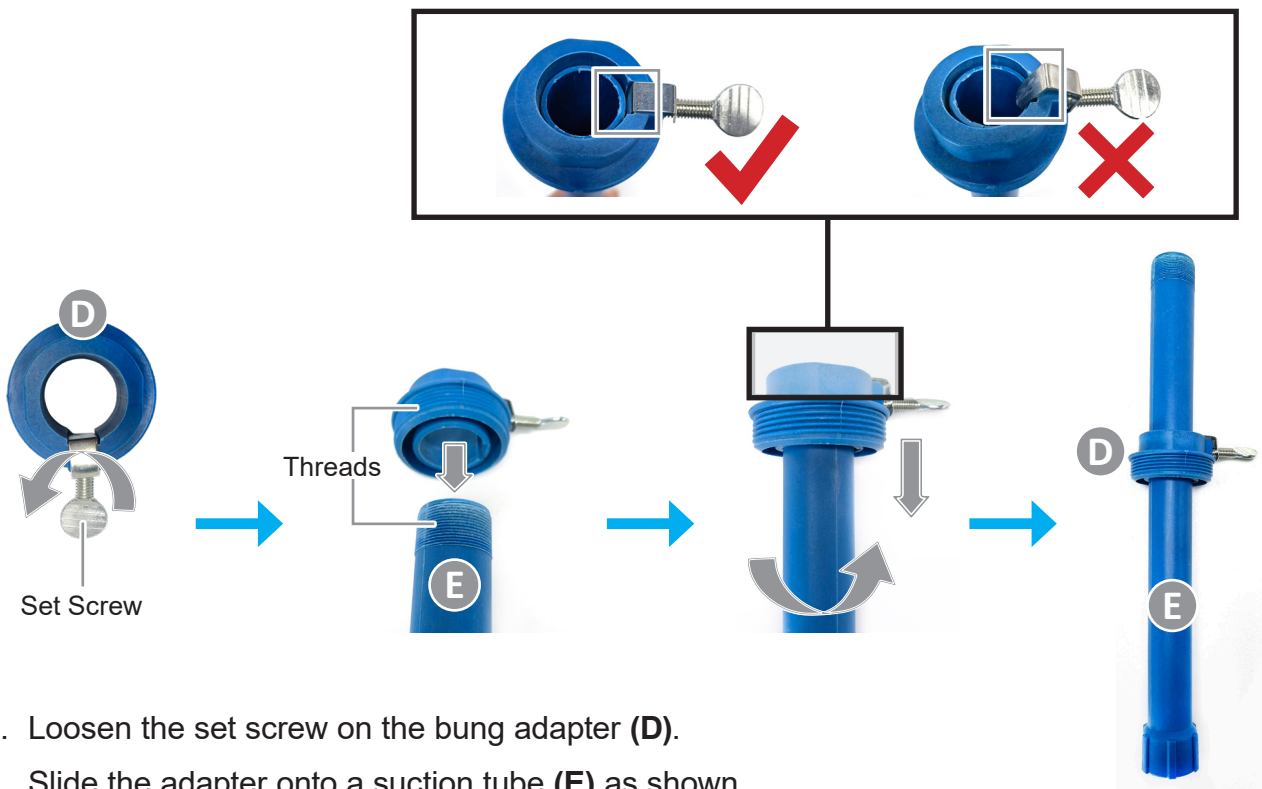
Note: Wrap each threaded part with the **PTFE** tape (**G**) or other equivalents **BEFORE** any attachment.

1



- Locate the threaded end of the spout (**A**).
- Locate the smaller hole of the drum (**B**).
- Screw the end into the hole by pressing down on the drum while rotating the spout.

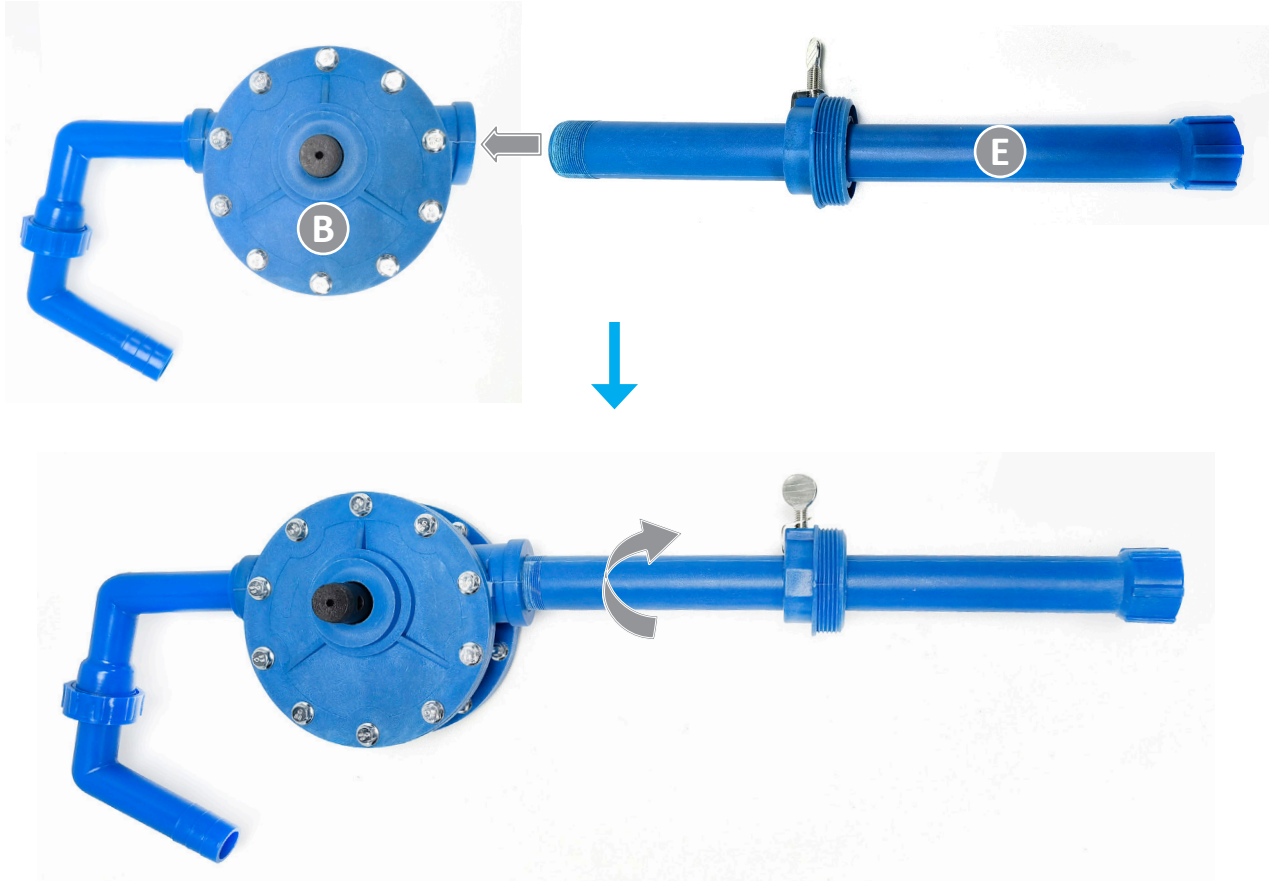
2



- Loosen the set screw on the bung adapter (**D**).
- Slide the adapter onto a suction tube (**E**) as shown.

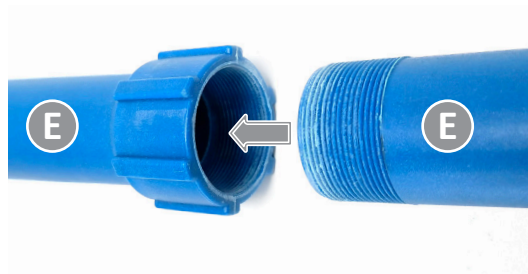
Assembly

3



Screw the suction tube (E) onto the remaining hole of the drum (B) using its outer threads.

4

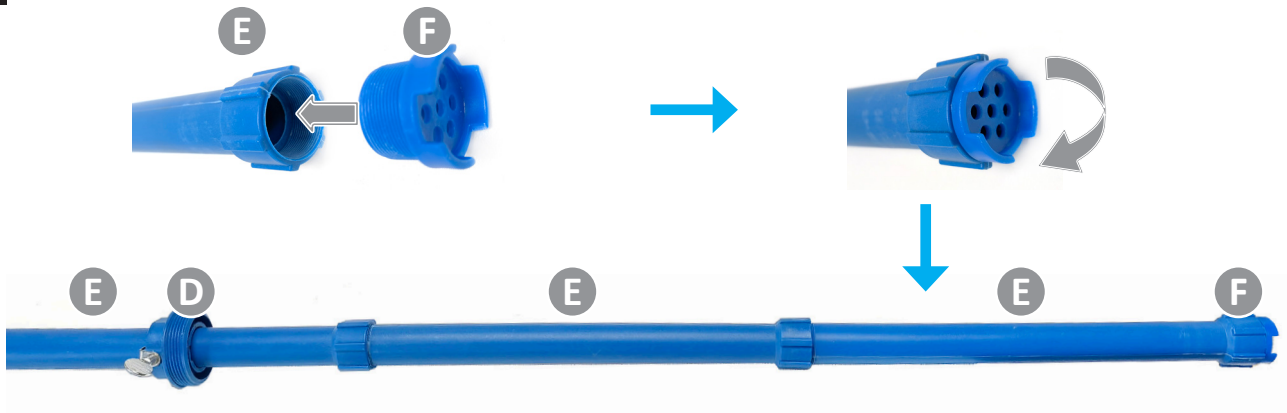


Screw this tube onto the other one or two tubes (E) according to the depth of your liquid container.

Note: Each tube is 1.1 feet (35.7 cm) long.

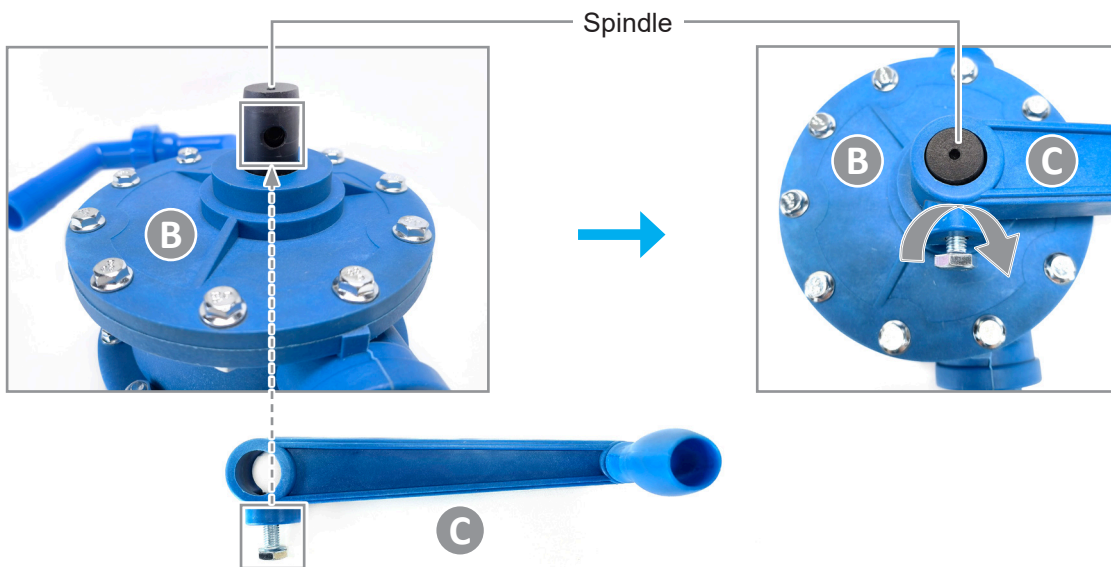
Assembly

5



Screw the filter (F) onto the tube (E) exposed in the end.

6



- Loosen the locking bolt on the slot of the rotary handle (C).
- Align the bolt with the hole on the spindle of the drum (B).
- Attach the handle to the spindle using its slot.
- Retighten the bolt until the handle becomes secure to the spindle.
If necessary, use a 10 mm or adjustable wrench (**not included**).
- Rotate the handle, testing that the spindle turns smoothly.

Note: If the spout interferes with the handle, turn the spout away.

For best results, turn it clockwise to ensure a tight connection. If clockwise turns are impractical, **DO NOT** turn it counterclockwise too much.

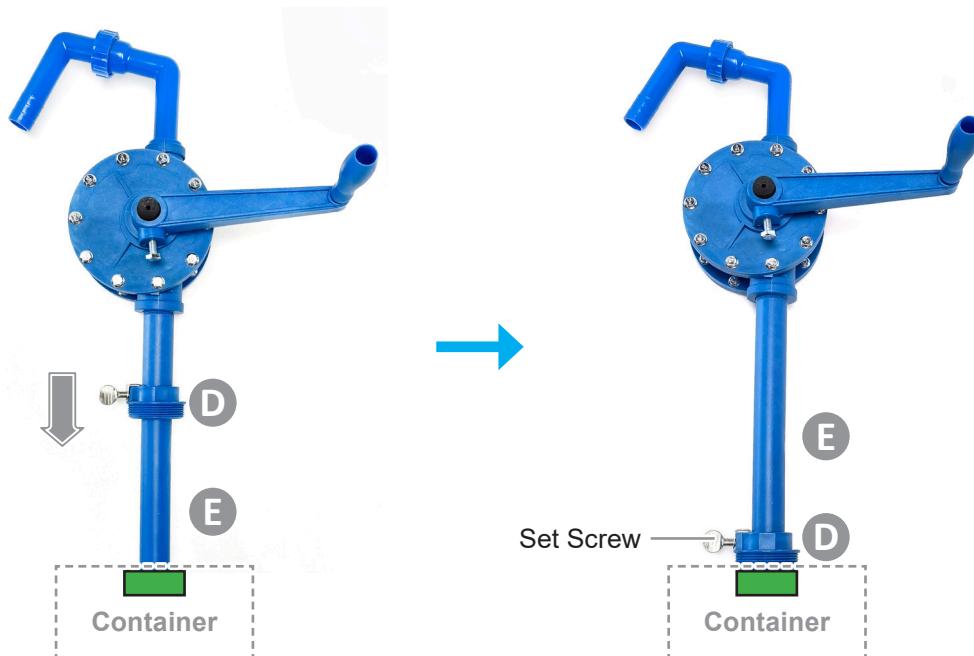
Installation

1. Insert the suction tube assembly (E) into your liquid container's outlet as much as possible.

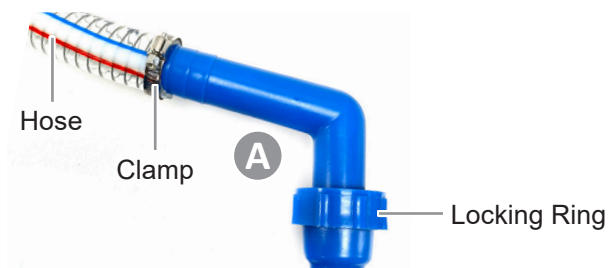
Note: Make sure the outlet suits the 1-3/4" (42 mm) outer diameter of the tube bottom.

2. Slide the bung adapter (D) down to the container, **FULLY** covering the outlet.

Note: If the adapter and the outlet match in threads, i. e., 2" (50.8 mm), screw the adapter into place to seal the outlet completely.



3. Retighten the adapter's set screw until the tube assembly is locked into place.
4. Select a hose (**not included**) appropriate for your liquid and the 1" (26 mm) outer diameter of the spout (A).
5. Secure the hose to the spout using a dedicated clamp (**not included**).



Installation

6. Extend your hose to the target place for transfer.

Note: *If necessary, reset the spout's direction to fit your target place.*

- a. *Loosen the locking ring around the spout.*
- b. *Rotate the spout's front part until it reaches your desired direction.*
- c. *Retighten the ring until the part cannot rotate.*

Operation

Warning

- *Read the **Safety Information** section **BEFORE** use and follow **ALL** instructions therein **DURING** use.*
Pay particular attention to necessary PPE, compatible liquids, and sensible use.
- *For optimal safety and performance, we recommend you take training **BEFORE** operating this product.*
Injury and failure could happen due to a lack of training.

Note: ***ALWAYS** ensure abundant liquid in your container **BEFORE** transfer.*
Insufficient level will result in transfer failure.

1. Check that **ALL** connections **ARE** correct and securely tightened.
2. Firmly hold the drum or tube assembly, rotating the handle clockwise until liquid flows out of the spout.
3. When finished, simply stop rotating the handle.
4. For best results, remove the bung adapter from your container, slide the tube assembly away, and disassemble this product for cleaning and other maintenance after each use.

Danger

Note: *Take care **NOT** to spill liquids like diesel, engine oil, and kerosene on **ANY** flammable substances.*

Maintenance

- Clean this product using a soft cloth with a mild detergent after each use.

Rinse entirely clean and dry completely before further use.

Caution

- **DO NOT** use harsh abrasives or caustic chemicals.
- **DO NOT** soak in any cleaning fluid for a prolonged period of time.

- Check this product for any misalignment, wear, or damage between uses.

Replace any problematic parts before further use.

- If this product is not to be used for an extended period of time, place all parts in a case (**not included**) before storing everything in a cool dry location inaccessible to children or pets, against unauthorized use, and well protected from the elements.



Contact Us

Thank you for choosing our products! If you have any questions or comments, contact us at support@orionmotortech.com and we'll resolve your issue ASAP!

For a .pdf copy of the latest version of these instructions, use the appropriate app on your smartphone to scan the QR code to the right.

