

Bearing Separator and Puller Set

User Manual

Read Carefully Before Use
Keep for Future Reference



OMT
Orion Motor Tech

UM-PUL-0044-V2

Disclaimer

Read this disclaimer completely and carefully before proceeding with the rest of the manual content.

1. Product Modifications

Any modifications or alterations to Orion Motor Tech (OMT) products void any warranties and may result in damage or injury. OMT shall not be liable for any damages resulting from such modifications or alterations.

2. Compliance with Laws

Customers shall be liable for ensuring that the use of OMT products complies with all applicable laws and regulations in their respective jurisdictions. OMT shall not be responsible for any violations of laws or regulations resulting from the use of OMT products.

3. Correct Use

Always use OMT products only as directed in the accompanying manuals. Failure to follow instructions may result in injury or damage.

Always ensure the assembly, installation, operation, maintenance, or repair of OMT products is carried out by a competent person.

Regular maintenance should be performed throughout the lifecycle of OMT products. You are responsible for ensuring the products operate as intended.

Always wear appropriate protective gear.

4. Third-Party Products

OMT shall not be liable for any damages or losses resulting from the use of third-party products in conjunction with OMT products. Customers shall refer to the third-party's guidelines and/or warranties (if any) for any third-party products used.

5. Limitation of Liability

OMT shall not be liable for any direct, indirect, punitive, incidental, special, or consequential damages to property or life, whatsoever arising out of or connected with the use or misuse of OMT products. In no event shall OMT's liability exceed the value of the products sold.

6. Warranty

Refer to the sales page for warranty information.

This disclaimer states the entire obligation of OMT with respect to OMT products. If any part of this disclaimer is determined to be void, invalid, unenforceable, or illegal, including but not limited to the warranty disclaimers, liability disclaimers, and liability limitations set forth above, the invalid or unenforceable provision will be deemed superseded by a valid and enforceable provision that most closely matches the intent of the original provision and the remainder of the agreement shall remain in full force and effect.

Contact Us

Thank you for choosing our products! If you have any questions or comments, contact us and we'll address your issues ASAP!



support@orionmotortech.com



<https://orionmotortech.com/>

@OrionMotorTech



Safety Information

Danger

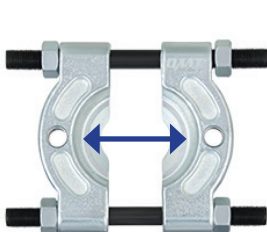
- The following instructions are for general guidance only. **ALWAYS** perform repairs in full compliance with your vehicle's service manual.
- **ONLY** use this product for its intended purpose: removing bearings .
- **DO NOT** allow use by children, individuals with mental or physical conditions that may impair safe operation, or persons unfamiliar with this product and its compatible air conditioning, fuel, and transmission systems.
- **DO NOT** use this product if you are tired or under the influence of drugs, alcohol, or strong medication.
- **ALWAYS** use personal protective equipment (PPE) suitable for your task. While using this product, always wear ANSI-approved eye and hand protection. Nonslip footwear is strongly recommended. Other equipment, such as ear, head, and body protection, may also be necessary depending on your work.
- **ALWAYS** read and understand your vehicle's specific safety warnings and instructions before using this kit. Use only the correct fluids, pressures, adapters, and other necessary components for your vehicle.
- Ensure the parking brake is engaged before beginning any work. Use a jack and jack stands rated to support the full weight of your vehicle.
- **DO NOT** overreach. Keep proper footing and balance at all times.
- Keep this product in good working condition. Check for misalignment, binding, wear, or other damage before each use. If any damage is found, repair or replace the affected components before further use. If this product is used in a commercial or workshop setting, clearly label any damaged parts with "**DO NOT USE**" and ensure they are repaired or replaced before being used again. **ONLY** use identical parts for any replacements.

Warning

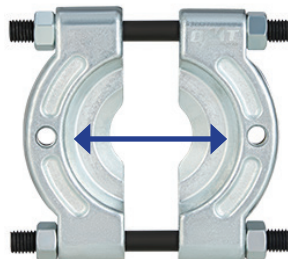
- **DO NOT** operate this tool kit using high-speed equipment such as lathes or drill presses .
- **DO NOT** modify or alter any part of this tool kit.
- Dress appropriately for automotive servicing. Do not wear loose clothing or jewelry. Keep hair, clothing, gloves, hoses, and tools away from moving parts during use.
- Use the correct size wrench to avoid slippage or damage to the tool.
- In case of an accident or injury, keep a first aid kit and a communication device (such as a phone) readily available. Be familiar with the location of nearby emergency medical facilities.
- Automotive servicing involves inherent risks. This manual and your vehicle's service manual cannot cover every possible scenario. **ALWAYS** use sound judgment and caution. Seek proper training if you are unsure how to proceed.

Specifications

Dimensions	15.5 × 9.9 × 3.6 in	39.3 × 25 × 9 cm
Weight	12.3 lb	5.6 kg

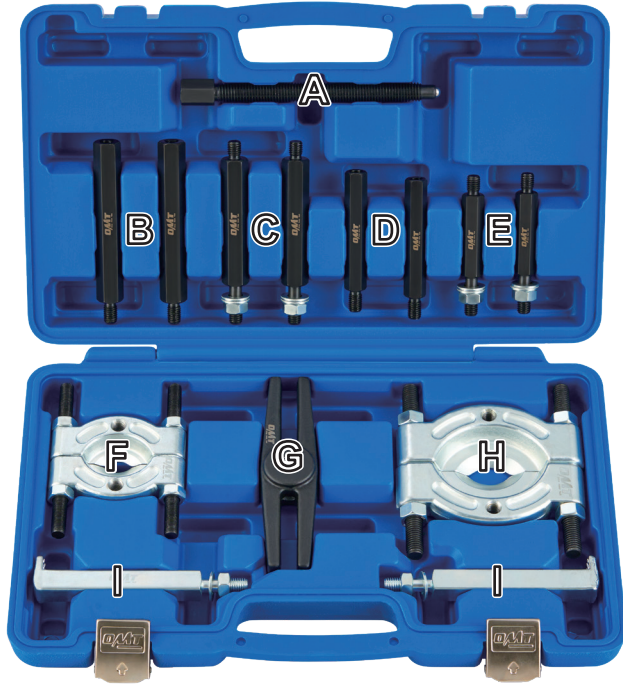


1.2-2 in (30-50 mm)



2-2.75 in (50-70 mm)

Parts List



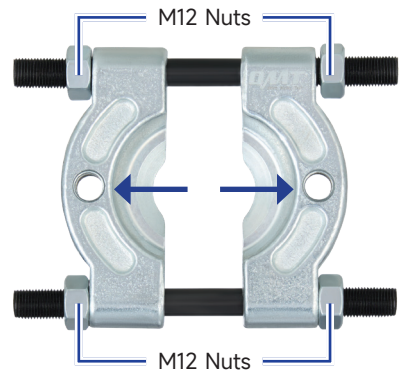
No.	Item	Qty.
A	M14 Lead Screw	1
B	5-1/3 in Extension Screws (Upper Part)	2
C	5-1/3 in Extension Screws (Lower Part)	2
D	4-1/3 in Extension Screws (Upper Part)	2
E	4-1/3 in Extension Screws (Lower Part)	2
F	2 in Bearing Separator Jaw	1
G	6 in Yoke	1
H	3 in Bearing Separator Jaw	1
I	Puller Legs	2

Operation

Warning

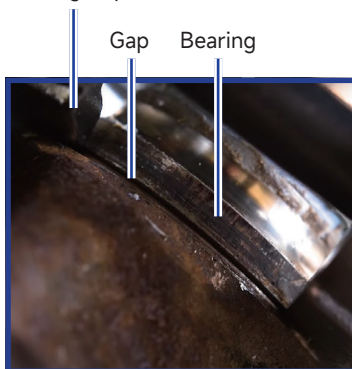
- **Before servicing, shut off the engine, set the parking brake, and chock the wheels.** Ensure the vehicle is stationary and the engine has cooled to room temperature before performing any maintenance or adjustments.
- **ALWAYS** use the correct tools and personal protective equipment (PPE) before starting any work. Be extremely careful with possible pinching points, moving parts, or components that may spring out unexpectedly.
- **ALWAYS** ensure the vehicle is securely supported when using a jack or lift.
- **DO NOT** force the tool. Excessive force may cause serious personal injury or property damage.
- For your safety, proper training is strongly recommended before using the tool. Lack of training can lead to serious injury.

1. Select the proper bearing separator jaw (F or H).
2. Open the bearing bore wide enough by loosening the M12 nuts on the separator.

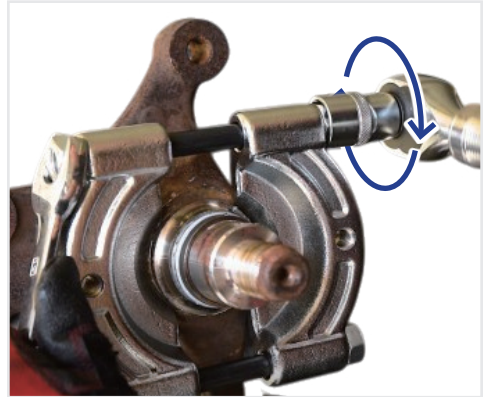


3. Position the bearing separator jaw at the gap between the bearing and its mating surface.

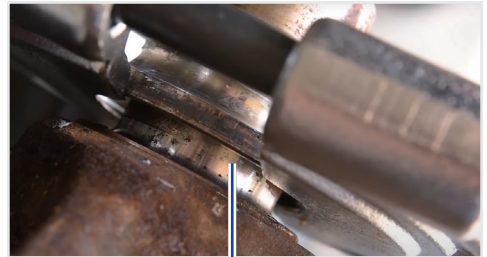
Bearing Separator Jaw



4. Tighten the nuts by turning clockwise (toward you).

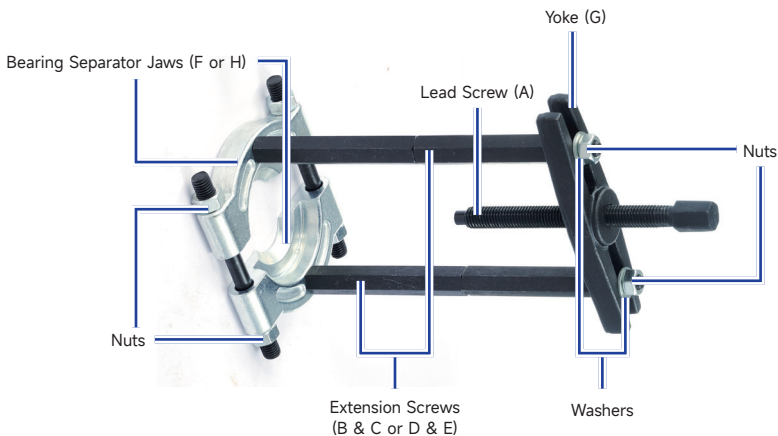


5. Keep tightening the nuts until the jaw makes firm contact with the bearing. A slight increase in the gap signals the jaw is properly secured for safe pulling.



Gap

6. Screw both extension screws (B & C or D & E) into the bearing separator jaw.
7. Place the 6 in yoke (G) over the extension screws and tightly secure it with washers and nuts.
8. Screw the lead screw (A) into the yoke until it contacts the center of the shaft where the bearing is mounted.



9. Turn the lead screw clockwise using a wrench (not included) until the bearing is removed from the shaft.

Note

If the bearing is hard to remove, spray some lubricant on the shaft and try again.

10. Disassemble the tool and store the parts in the provided case.

Maintenance

- Clean the tool after each use with a soft, damp cloth and a mild detergent. Do not rinse it directly with water or use abrasive cleaners or caustic chemicals.
- For best results, lubricate the tool with high-quality anticorrosive oil between uses.
- Check all parts periodically for any wear or damage. Repair or replace any faulty parts before further use.
- If the tool is not be used for a long time, clean and lubricate it before storage. Keep it in a cool, dry place out of reach of children.



User Manual